

Where the **journey** of
lifelong learning begins





Where growth, learning, and discovery happen every day.

Through enriching play, a language-rich environment, a loving staff, and friendships, children who come to Bright Horizons build a strong foundation for a lifetime of learning. Our standards are based on the National Association for the Education of Young Children's rigorous accreditation criteria, so you can be assured your child is receiving the highest quality of care and education.

From Your Home to Ours

At Bright Horizons, we recognize that a child doesn't come to us alone, but as a member of a family. The family is our starting point for developing programs and partnerships that create a strong sense of community. When you leave your child at a Bright Horizons center, you can rest assured that she or he is being cared for by well-trained, caring, and responsive early care and education professionals.

The Parent-Teacher Partnership

Our role as early care and education experts is to complement the primary role of parents in providing care for their children. From casual conversations, daily notes, and parent-teacher conferences to a standing invitation to drop in at any time of the day, we actively encourage communication between parents and teachers.

The World at Their Fingertips

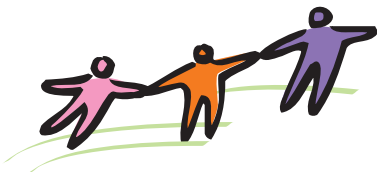
Our program for learning, [*The World at Their Fingertips*](#), creates developmentally appropriate educational environments that empower children to be confident, successful, lifelong learners. The [*World*](#) curriculum is based on established research and theory in child development and education. It places a strong emphasis on the development of language, math, science, and social skills while preparing children for success in school and life.

The World of Infants

The *World* for [*babies*](#) provides a safe, welcoming environment abundant with opportunities to actively explore and enjoy; to see, hear, feel, touch, and move. Babies need a healthy place filled with responsive interactions, nurturing care, and language.

The World of Toddlers and Twos

The *World* for [*toddlers and twos*](#) reflects the continually changing nature of the growing, active child. Their environment is made up of well-planned learning centers that allow for physical activity, child choice and self-directed play, small groups, and supportive teaching that encourages optimal development.



Growing at Bright Horizons

Family Resources for Growing Children

The following resources for parents and children are available online at www.brighthorizons.com/growing.

[Growing Readers](#)

[Growing Scientists](#)

[e-family news](#)

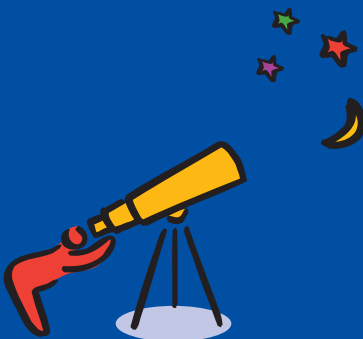
[Staying Healthy](#)

[READY for SCHOOL](#)

Come See Us at Work

To experience the unique, caring, high-quality environment of a Bright Horizons child care and early education center, simply pay us a visit. Take the first step toward setting your child on a lifelong journey of learning.

www.brighthorizons.com
866.854.1958



The World of Preschool Children

The *World* for [preschool children](#) focuses on children's newly emerging skills and advanced use of language, math, and scientific thought. The curriculum offers a rich variety of projects and activities that appeal to expanding interests and provide ample challenges and opportunities. The *World* curriculum recognizes that children will need to enter kindergarten with all the social and pre-academic skills necessary to succeed in school and life.

The World of Kindergarten

Our comprehensive [kindergarten](#) curriculum challenges children and supports all areas of development necessary for achievement in school. Each Bright Horizons center develops expectations in concert with the local schools that children will be attending. There is a clear emphasis on continuing development of strong language, reading and writing abilities, and math skills essential for ongoing success in school.

The World of School-Age

The [school-age](#) program recognizes the growing physical, intellectual, and social competence of older children. School-age children up to age 12 can enroll in Bright Horizons centers that offer before- and after-school care, back-up care for school holidays and school closings, and summer day-camp programs.

The World of Back-Up Care

Bright Horizons recognizes that [back-up care](#) is a special kind of care for young children. In our back-up centers, a primary caregiver is assigned to each child and family to ensure individualized care and parent-caregiver partnerships. The *World* learning environment is designed to offer opportunities for exploration and discovery, while the family atmosphere encourages children of different ages to play together.

Summer Programs

[Our World, Our Backyard](#) summer preschool program welcomes children into a world full of adventure, while continuing to build their skills and enhance their individual development. [Camp Explorations](#) for school-age children provides a place where children can exercise their growing ability to make choices and work with others in a relaxed, nonschool atmosphere.

*Not all programs are available in all locations.